

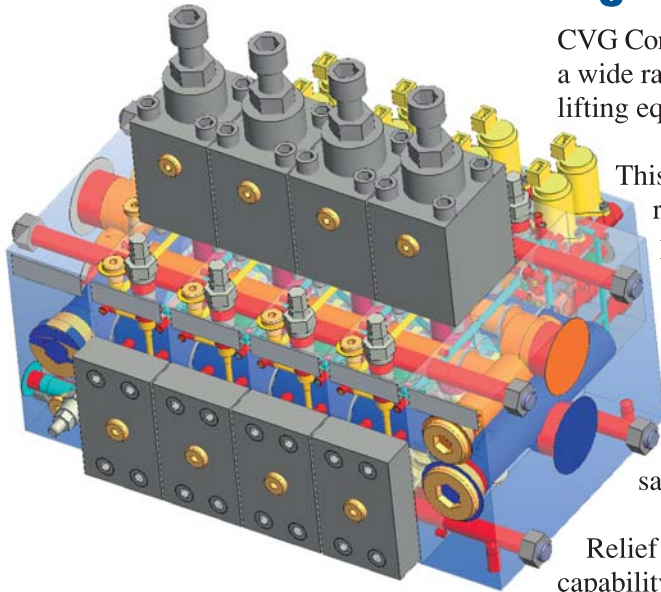
Control Valve Group for big mobile applications

CVG-M-5X-3X

CVG-M Control Valve

CVG-M Mobile valve for big mobile machines

CVG Control Valve Group for mobile applications can be used to control a wide range of different actuators on big cranes, large mobile vehicles, lifting equipment, mobile drilling rigs, etc.



This valve group is designed for functions that require high flow rate and accurate control. The directional valve sections are proportional according to the load-sensing principle. These sections are available in two nominal sizes: CVG30 and CVG50, which can be combined. Each main spool is pressure compensated in order to keep speed constant irrespective of load. Maximum flow can be adjusted separately for each section. In working ports maximum pressure can be adjusted with relief valves on LS lines, which contributes to energy-saving.

Relief valves with integrated anti-cavitation functions and high flow capability help protect your actuator. Every directional valve section is available with several options to meet the requirements for each controlled actuator. Control signal for each control valve can be hydraulic, electric, or both.

System

- Load pressure independent flow control
- Spool options for different applications

Design

- Sandwich plate design
- Inlet element with different options
- Up to 6 directional sections per section size
- Outlet section with different options

Flow

- Pressure compensated sections
- High repeatability
- Low hysteresis
- Nominal flow CVG30 up to 500 l/min (Δp 5 bar), max flow 750 l/min
- Nominal flow CVG50 up to 800 l/min (Δp 5 bar), max flow 1200 l/min

Pressure relief function

- Inlet element
- Main pressure relief valve (optional)
- Pressure reducing valve for reducing pressure in piloting (optional)
- Directional valve element / working ports
- LS relief valves for limiting maximum pressure on working ports
- Safety relief valves with anti-cavitation function for each working port

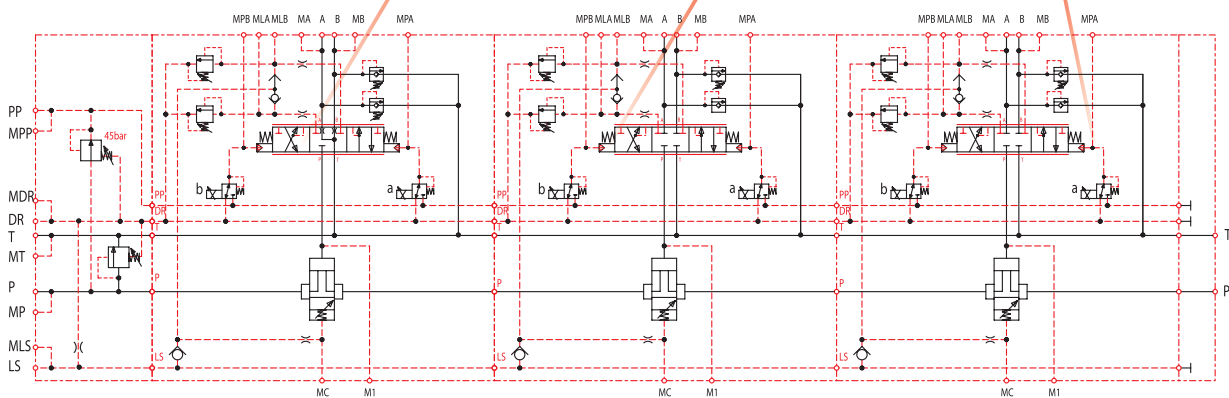
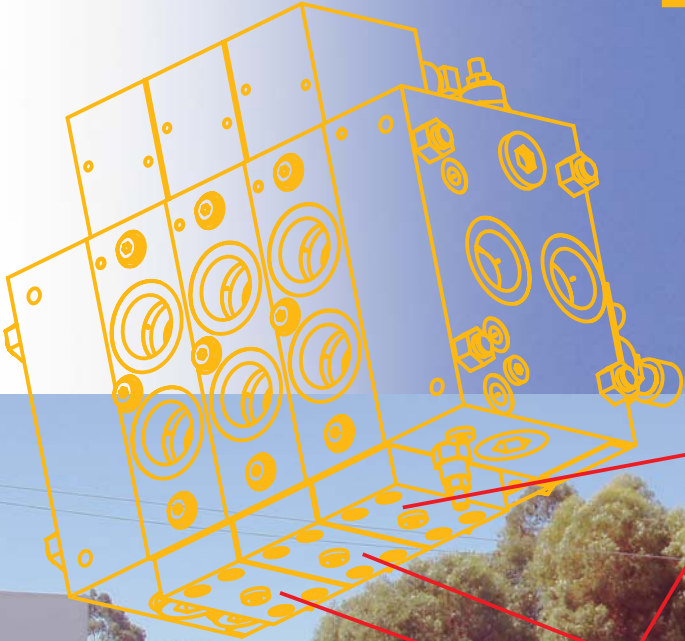
Fields of application

- Cranes
- Drilling machines
- Big mobile machines
- Other



Valve Group Mobile

Optimal nominal flow rate 300-1200 l/min



CVG - M - 5x - 3x

MOBILE

NUMBER OF SIZE 50 SECTIONS

NUMBER OF SIZE 30 SECTIONS



Parker Hannifin is a Fortune 300 company and the world's leading supplier of motion and control components and systems such as mobile hydraulic valves. The company posts over \$ 8 billion in sales annually, and serves 400,000 customers in 46 countries.

Parker is the first choice for mobile hydraulic valves, with extensive product lines and in-depth know-

ledge of markets such as construction, aerial work platform, refuse, forestry, material handling, truck, mining, agriculture, and snow and ice. The company's experienced engineers and field sales teams assist customers at every stage of the design and build process, from selecting the right valve to optimizing its performance in an application.

Parker Hannifin Oy

Lokomec
Tampere
Finland



Parker Hannifin Oy

Lokomec

Polunmäenkatu 22, P.O. Box 116
FIN-33721 Tampere, Finland

Tel: +358 20 753 2600

Fax: +358 20 753 2601

www.lokomec.fi

www.parker.com