



SV Shuttle Valve

*Catalog FI-EN102-A
September 2006*



Technical information, Ordering code

FEATURES

Simple shuttle valve for example for pilot lines when two controllers are piloting one actuator.

DESCRIPTION

SV shuttle valve is designed for pipe mounting. The valve has two inlet ports 1 and 2 and one outlet port 3. When the ports 1 and 2 are pressurised the higher pressure is connected to the port 3 and the lower one is closed by a ball against a steel seat.

CHARACTERISTICS

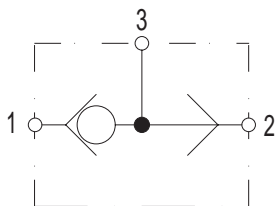
Design	Pipe mounted valve
Mounting position	Optional
Ambient temperature range	-30° C ... + 50° C
Maximum pressure (ports 1, 2 and 3)	350 bar
Nominal flow	12 l/min
Fluid	Mineral oil according to DIN 51524 and DIN 51525
Fluid temperature range	- 20° C ... + 70° C
Contamination level	Max. permissible contamination level according to NAS 1638 Class 8 (Class 9 for 15 Micron and smaller) or ISO 17/14
Weight	0,8 kg
Materials	Carbon steel or stainless steel
Surface treatment	Electro-chemically zinc coated stainless steel valve body: no surface treatment

ORDERING CODE

Type:	SV-06-A/SS
Shuttle valve _____	
Nominal size 06 _____	
Design letter _____	
Material option _____	
No code = material is carbon steel SS = material is stainless steel	

Hydraulic diagram, dimensions

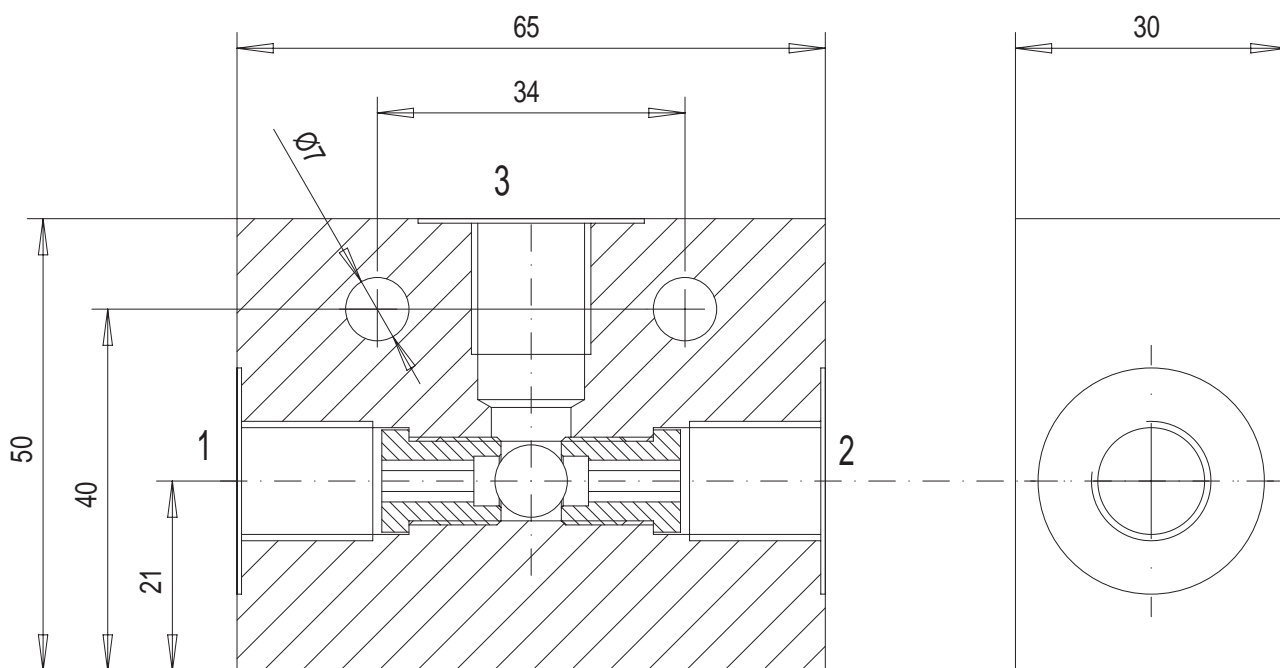
HYDRAULIC DIAGRAM



CONNECTIONS

CODE	SIZE
1, 2, 3	R 1/4" BSP

DIMENSIONS



⚠ WARNING

FAILURE OR IMPROPER SELECTION OR IMPROPER USE OF THE PRODUCTS AND/OR SYSTEMS DESCRIBED HEREIN OR RELATED ITEMS CAN CAUSE DEATH, PERSONAL INJURY AND PROPERTY DAMAGE.

This document and other information from Parker Hannifin Corporation, its subsidiaries and authorized distributors provide product and/or system options for further investigation by users having technical expertise. It is important that you analyze all aspects of your application and review the information concerning the product or system in the current product catalog. Due to the variety of operating conditions and applications for these products or systems, the user, through its own analysis and testing, is solely responsible for making the final selection of the products and systems and assuring that all performance, safety and warning requirements of the application are met.

The products described herein, including without limitation, product features, specifications, designs, availability and pricing, are subject to change by Parker Hannifin Corporation and its subsidiaries at any time without notice.

Offer of Sale

The items described in this document are hereby offered for sale by Parker Hannifin Corporation, its subsidiaries or its authorized distributors. This offer and its acceptance are governed by the provisions stated in the "Offer of Sale".

Parker Hannifin Oy

Lokomec
Tampere
Finland



Parker Hannifin Oy

Lokomec

Polunmäenkatu 22, P.O. Box 116
FIN-33721 Tampere, Finland

Tel: +358 20 753 2600

Fax: +358 20 753 2601

www.lokomec.fi

www.parker.com

Catalog FI-EN102-A

FIN 9/2006

